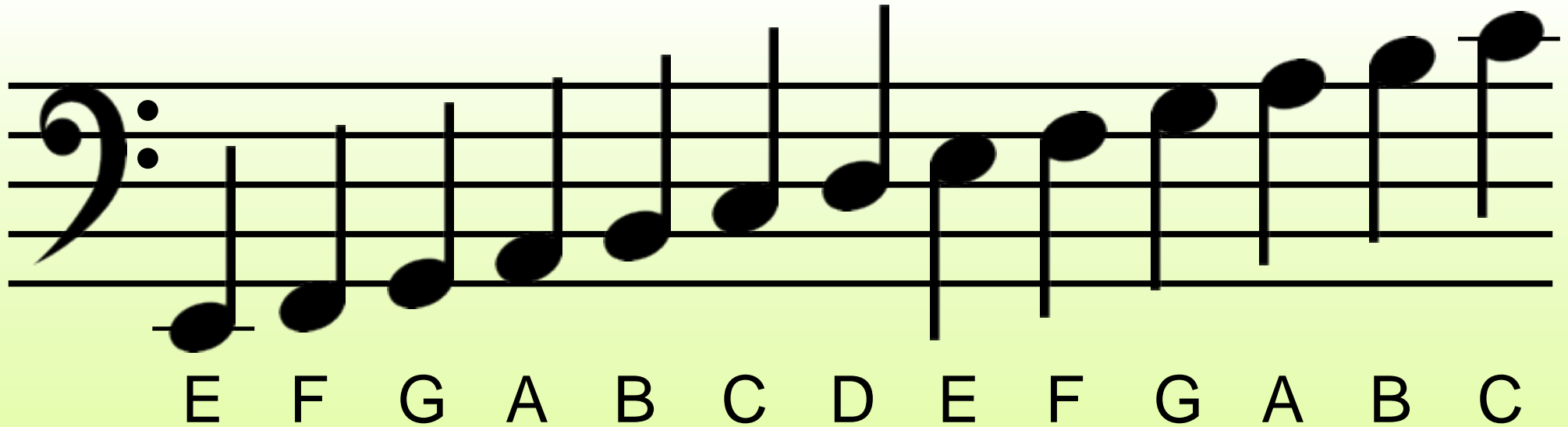


# The Bass Clef

Can you remember  
the notes on a  
musical staff?

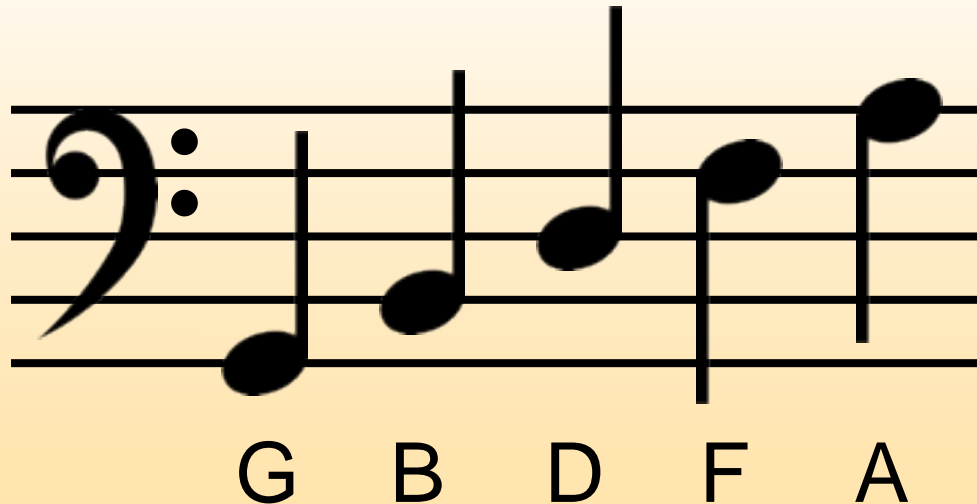
©Teaching Ideas  
[www.teachingideas.co.uk](http://www.teachingideas.co.uk)  
Images: © ThinkStock



A musical staff with a bass clef. The staff contains a sequence of 13 notes: E, F, G, A, B, C, D, E, F, G, A, B, C. The notes are placed on the lines and in the spaces of the staff. Below each note is its corresponding letter name.

E F G A B C D E F G A B C

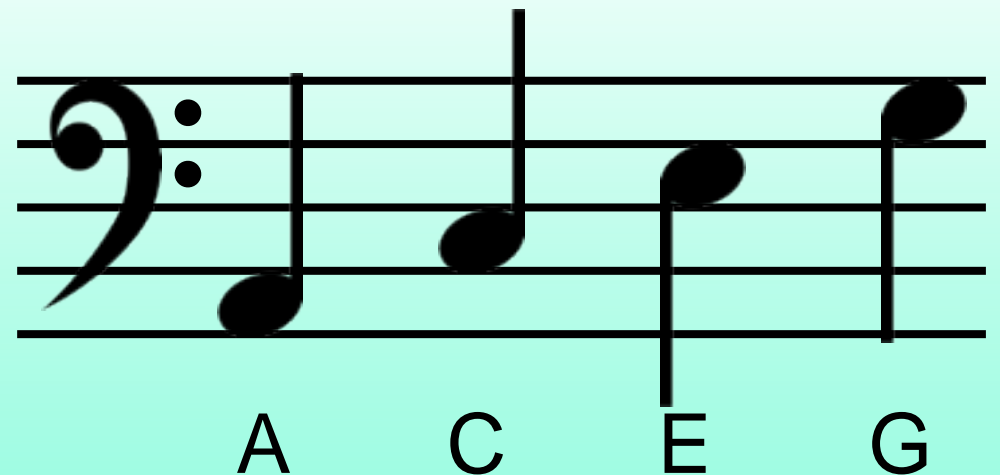
Notes on the lines



A musical staff with a bass clef. The staff contains five notes placed on the lines: G, B, D, F, A. Below each note is its corresponding letter name.

G B D F A

Notes in the spaces



A musical staff with a bass clef. The staff contains five notes placed in the spaces: A, C, E, G. Below each note is its corresponding letter name.

A C E G

# The Bass Clef

Can you remember  
the notes on a  
musical staff?

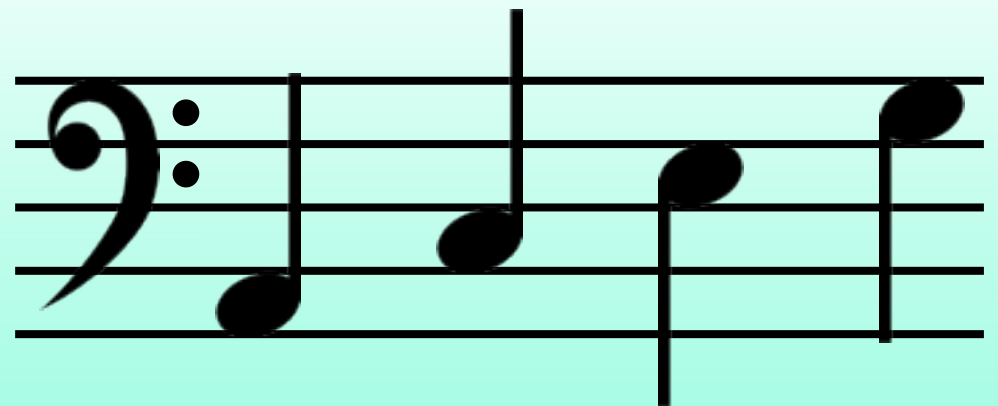
©Teaching Ideas  
[www.teachingideas.co.uk](http://www.teachingideas.co.uk)  
Images: © ThinkStock



Notes on the lines



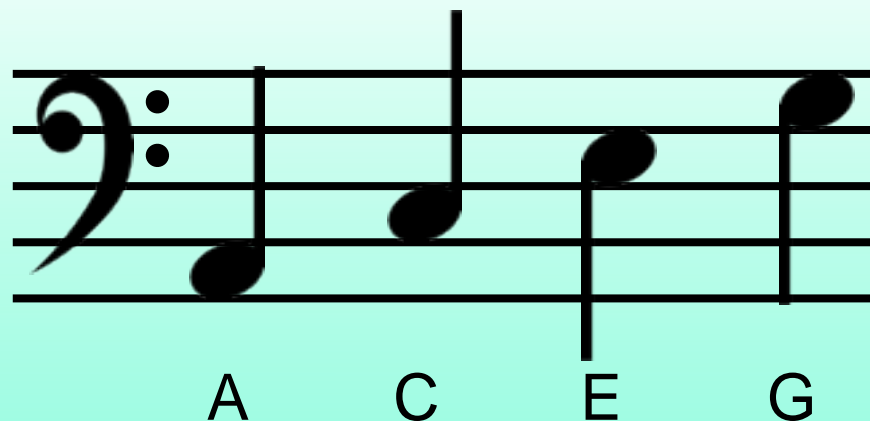
Notes in the spaces



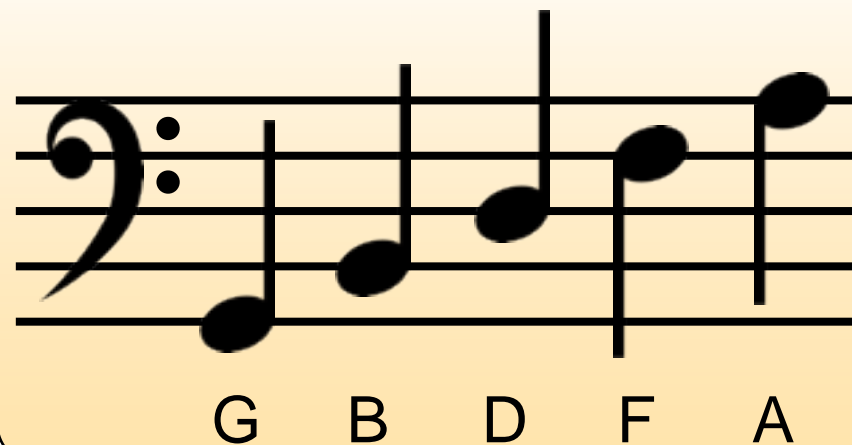
# The Bass Clef

Can you think of some mnemonics to remember these notes?

## Notes in the spaces



## Notes on the lines



A			
C			
E			
G			

G			
B			
D			
F			
A			