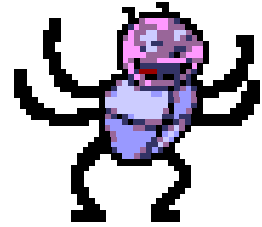
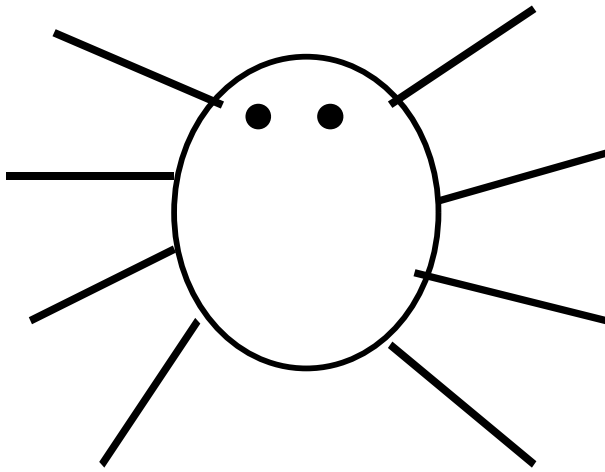


## Spider Spider



Teams compete against one another to be the first to draw a complete spider. Players throw 2 die together to create a multiplication sum. The factors of the total will determine the part of the spider that the team can draw. The players must race to throw the correct combination to make a body, 8 legs and 2 eyes to complete the spider. (The parts of the body must follow in this order.)



Body = x 3

Legs = x 2

Eyes = x 6

When a team has completed the spider they call out “spider spider” and they are pronounced the winning team.

### Variations:

- \* This game may be played with individuals rather than in teams.
- \* Different times tables can be used.

Eg. Body = x 6  
Legs = x 4  
Eyes = x 8 ... for a harder game

- \* If a 1 is thrown on either of the two dice the player calls out “web”. While this player is continuing with the game the other teams/players then have to stop and spell spider before they can continue play.